

# Planting Schedule

## Tree & Conifer Planting

Nr	Text	Plant Name	Height	Girth	Root
5	CAR FRA	Carpinus 'Frans Fonatine'	400-500cm	18-20cm	RB
1	LIG JAP	Ligustrum Japonicum	400-500cm	18-20cm	C

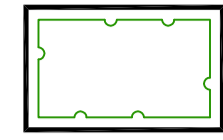
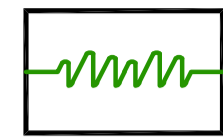
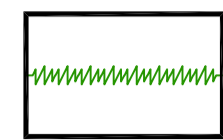

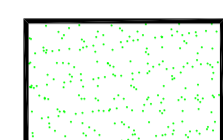
6

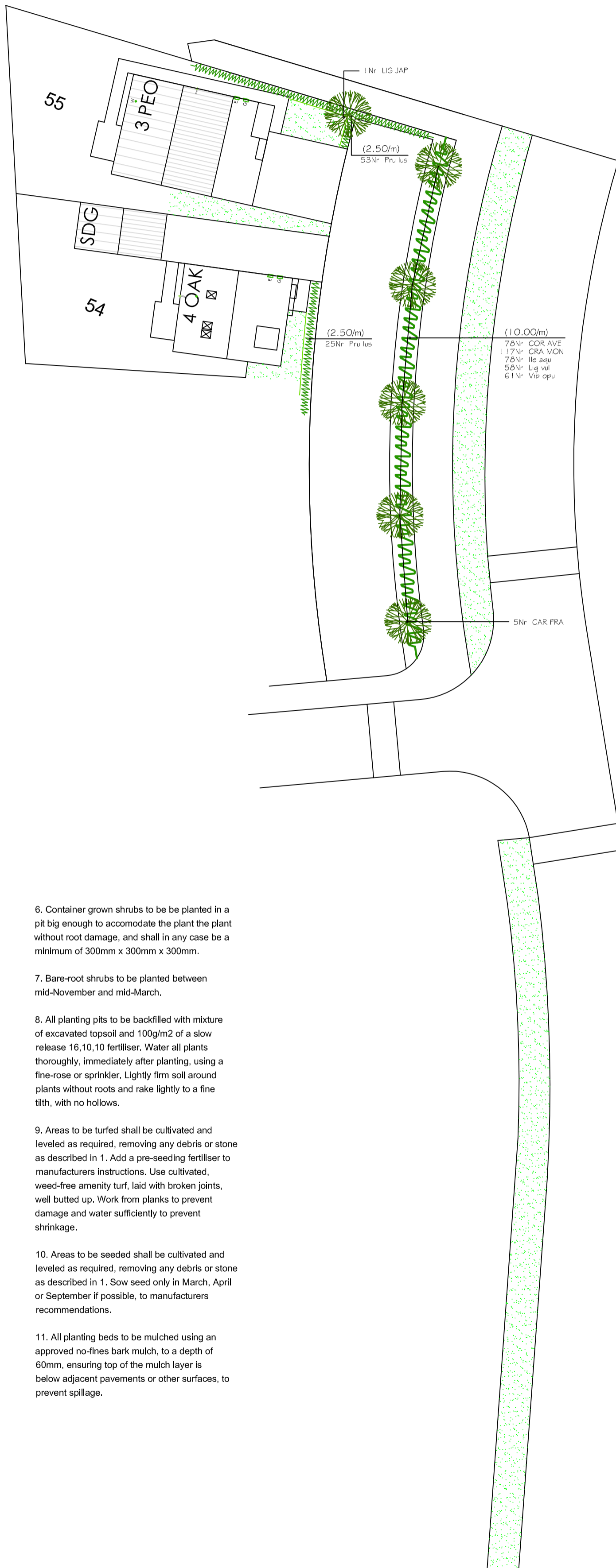
## Shrub & Hedge Planting

Nr	Text	Plant Name	Height/Spread	Container
78	COR AVE	Corylus avellana	60-80cm	2L
117	CRA MON	Crataegus monogyna	60-80cm	2L
78	Ile aqu	Ilex aquifolium	40-50cm	2L
58	Lig vul	Ligustrum vulgare	50-60cm	2L
78	Pru lus	Prunus lusitanica	80-90cm	10L
61	Vib opu	Viburnum opulus	40-50cm	2L

470

# Key

-  Proposed ornamental shrub planting, including 60mm depth no-fines bark mulch.
-  Proposed hedge planting 1.5m wide in tripple staggered rows, including 60mm depth no-fines bark mulch.
-  Proposed hedge planting, including 60mm depth no-fines bark mulch.
-  Proposed standard tree planting including double stake and tie.
-  Proposed areas to be turfed with cultivated grade turf.



## GENERAL NOTES

- The contractor shall ensure that all topsoil is cultivated in accordance with BS 3882. All rubbish, concrete, metal, glass, decayed vegetation, contaminated soil (soil containing subsoil, rubble, fuel, lubricants or other substances damaging to plants) and stones with largest dimension exceeding 25mm, shall be removed. Topsoil minimum depths to be 450mm for areas of shrub or tree planting and 150mm for areas of turf or grass seeding.
- Cultivate and plant into moist, friable soil, free from compaction and that is not waterlogged, frozen or snow-covered, unless with the express permission of the Landscape Architect.
- Any imported topsoil is to comply with BS 3882 and be free from all rubbish, concrete, metal, glass, decayed vegetation, contaminants (as described in 1.) and stones with largest dimension exceeding 25mm.
- All planting and turfing shall conform to BS 3936 & 4428 and shall be carried out in strict accordance with the specification. All sizes quoted are the minimums acceptable. All plants to be supplied by nurseries listed by The Horticultural Trades Association Nursery Certification Scheme. No substitutions shall be acceptable without the prior written approval of the Landscape Architect.
- Standard trees to be planted in 650mm x 650mm x 400mm tree pits, and supported using 1No. 75mm dia stake, 1500mm long, per tree, driven 900mm into ground and secured with steel reinforced rubber belt SB30 & 1No. Original Standard Pad (01) per tree. Heavy Standard trees (and larger) to be planted in 800mm x 800mm x 600-750mm tree pits, and supported using 2No. 75mm dia stakes, 1500mm long, per tree. Stakes to be driven 900mm into ground prior to placement of rootball. Timber cross-brace to be fitted to top of posts and tree to be secured with steel reinforced rubber belt SP15 & 2No. Chunky Pas (04), per tree. Tree ties and spacers available from J.Toms Ltd, Ashford, TN27 9XT or similar and approved products may be used.
- Container grown shrubs to be planted in a pit big enough to accommodate the plant without root damage, and shall in any case be a minimum of 300mm x 300mm x 300mm.
- Bare-root shrubs to be planted between mid-November and mid-March.
- All planting pits to be backfilled with mixture of excavated topsoil and 100g/m<sup>2</sup> of a slow release 16,10,10 fertiliser. Water all plants thoroughly, immediately after planting, using a fine-rose or sprinkler. Lightly firm soil around plants without roots and rake lightly to a fine tilth, with no hollows.
- Areas to be turfed shall be cultivated and leveled as required, removing any debris or stone as described in 1. Add a pre-seeding fertiliser to manufacturers instructions. Use cultivated, weed-free amenity turf, laid with broken joints, well butted up. Work from planks to prevent damage and water sufficiently to prevent shrinkage.
- Areas to be seeded shall be cultivated and leveled as required, removing any debris or stone as described in 1. Sow seed only in March, April or September if possible, to manufacturers recommendations.
- All planting beds to be mulched using an approved no-fines bark mulch, to a depth of 60mm, ensuring top of the mulch layer is below adjacent pavements or other surfaces, to prevent spillage.

LDS	S	Landscape Design Solutions (NW) Ltd Landscape Architects
		479 Parrwood Road, Didsbury, Manchester, M20 5GG (T) 0161-215-0736, (M) 07776-147842 info@landscape-design-solutions.co.uk

Client  
Bellway Homes Ltd (NE)

Project  
Ingley Barwick

Drawing title  
Planting Plan - Plots 54-54

Scale 1:250 @ A2      Drawn by AKL      Date Oct 2017

Drawing No.  
**LDS406-02**